



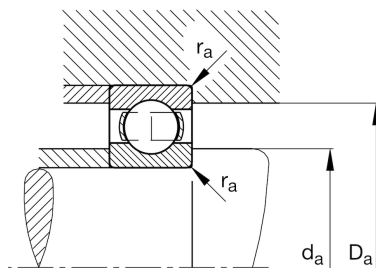
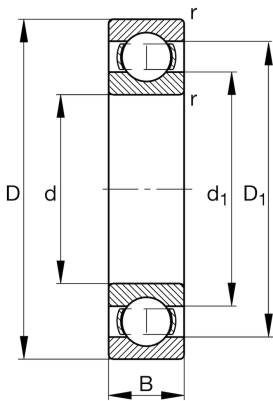
FAG

6007

Deep groove ball bearing

Schaeffler ID:
0167174300000Deep groove ball bearing 60, single row,
steel sheet metal cage

Technical information

**Main Dimensions & Performance Data**

d	35 mm	Bore diameter
D	62 mm	Outside diameter
B	14 mm	Width
C_r	17,000 N	Basic dynamic load rating, radial
C_{0r}	10,300 N	Basic static load rating, radial
C_{ur}	560 N	Fatigue load limit, radial
n_G	16,100 1/min	Limiting speed
n_{gr}	11,700 1/min	Reference speed
	0.146 kg	Weight

Dimensions

r_{min}	1 mm	Minimum chamfer dimension
D_1	53.3 mm	Shoulder diameter outer ring
d_1	43.2 mm	Shoulder diameter inner ring

Mounting dimensions

$d_{a min}$	39.6 mm	Minimum diameter shaft shoulder
$D_{a max}$	57.4 mm	Maximum diameter of housing shoulder
$r_{a max}$	1 mm	Maximum fillet radius

Calculation factors

f_0	14.9	Calculation factor
-------	------	--------------------

Temperature range

T_{min}	-30 °C	Operating temperature min.
T_{max}	120 °C	Operating temperature max.